



Circular Manufacturing  
Presentation for SLF  
January 2021



**Scottish Leather Group is committed to the sustainable manufacturing of leather. Sustainable by Nature is our commitment to put our impact on the environment, society and economy at the forefront of our decision-making.**

[www.sustainablebynature.co.uk](http://www.sustainablebynature.co.uk)

**We are a signatory to the United Nations Global Compact, a framework for businesses around the world to better embed and promote transparent, ethical sustainability practices and principles.**

[www.unglobalcompact.org](http://www.unglobalcompact.org)

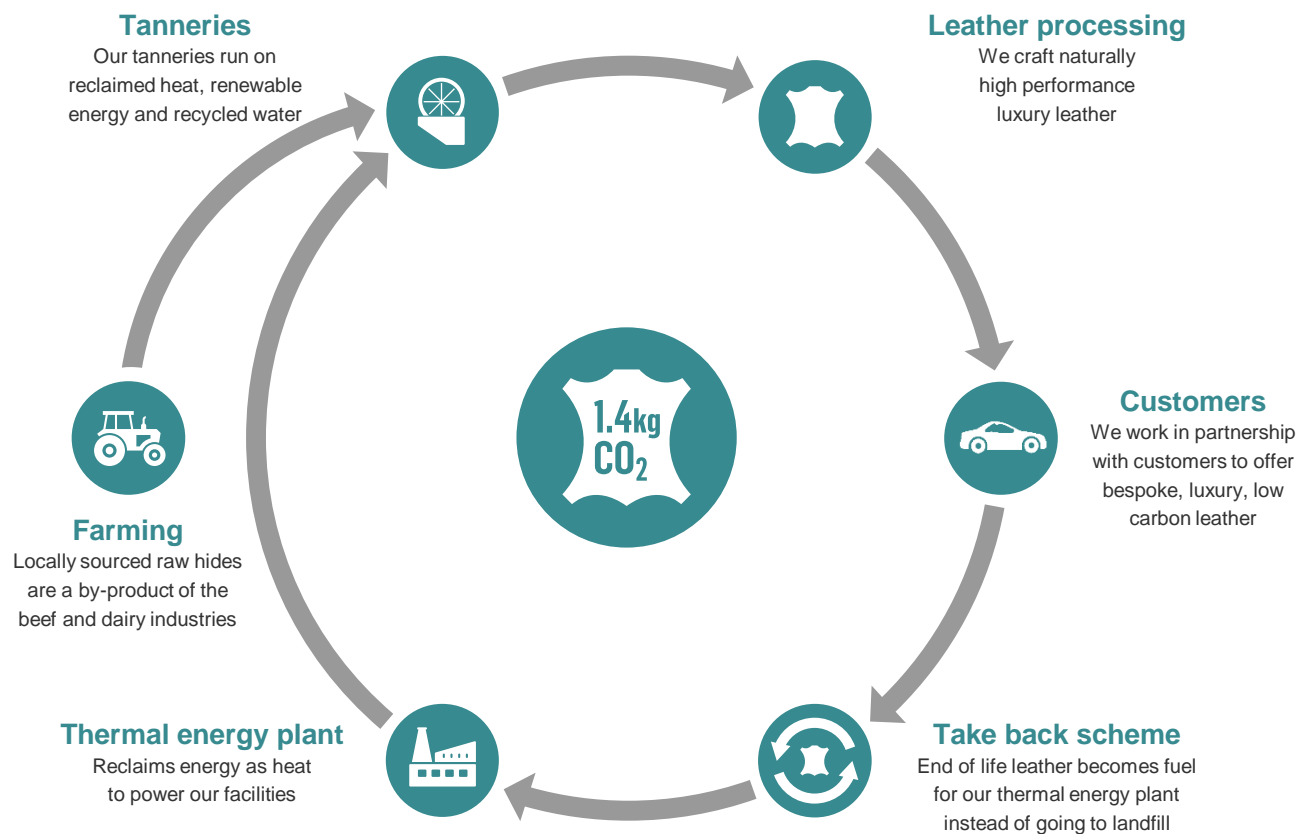
**We measure our performance against the UN sustainable Development Goals. Eight of the 17 goals have been identified as the places where the textiles industry can create the most impact for change.**



[sustainabledevelopment.un.org](https://sustainabledevelopment.un.org)

**Lowest carbon leather**  
SDG12: Responsible consumption and production

# Circular Supply Chain



**Sourcing locally**  
SDG15: Life on land

## Our hides are a by product of the local meat industry

Our raw material is a by-product  
of the local beef industry – their  
unwanted raw hides.

Values as reported by Quality Meat Scotland



**Value of raw hide**  
(Only 1%)

**Value of whole animal**

## Sourcing locally

SDG15: Life on land



---

We only source raw hides from the highest rated territories in the **Animal Protection Index**, with the UK being rated one of the highest.



---

**98.6%** of our raw hides are sourced within the UK & Ireland.

Our leather is **traceable** all the way from farm to factory.



---

Scottish beef farms operate at **net-zero** carbon.

**Sourcing locally**  
SDG15: Life on land

# Net Zero Carbon Impact

'Net zero' refers to achieving an overall balance between emissions produced and emissions taken out of the atmosphere

Methane emissions have a short lifespan in the atmosphere.

The equivalent level of CO<sub>2</sub> to the methane emitted by cattle is absorbed by the grass and other crops which they graze and feed.

**SLG have a commitment to "Net Zero by 2025" corporate carbon footprint**

Grazing cattle make a significant contribution to the retention and protection of this carbon store.



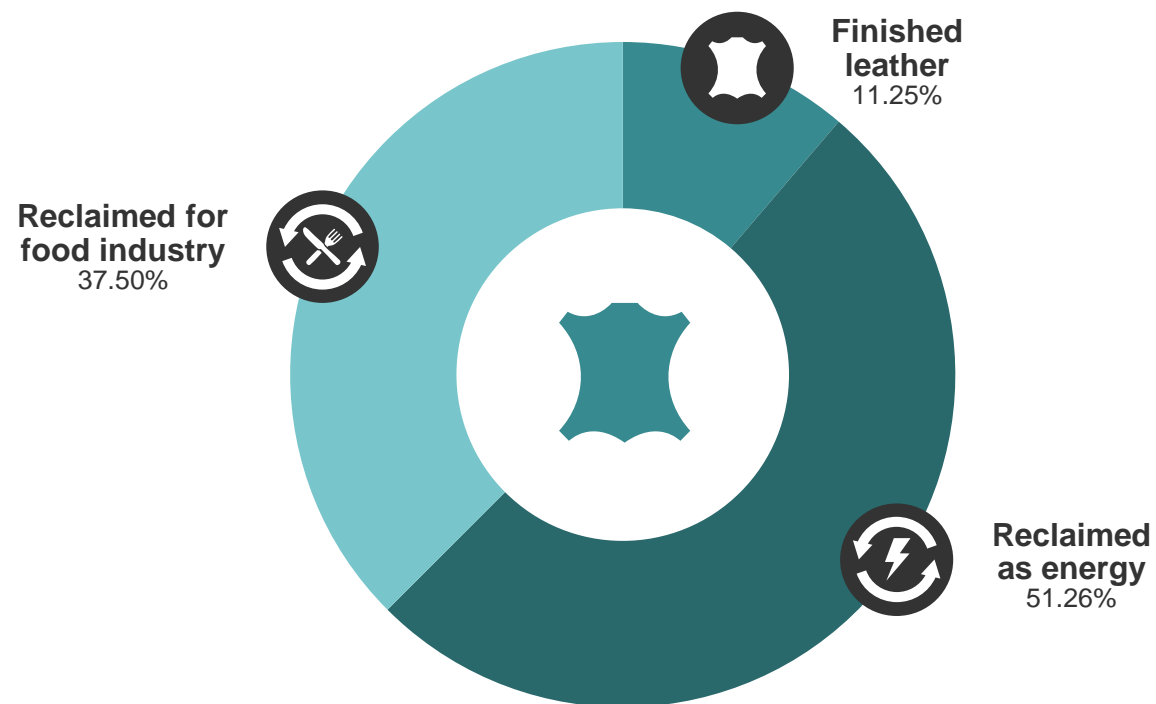
### Lowest carbon leather

SDG12: Responsible consumption and production

## No part of the hide wasted

An average raw hide weighs 40kg. Our finished leather averages 4.5kg.

The waste is all reclaimed as raw materials for the food industry (collagen etc.) or as fuel for our thermal energy plant.



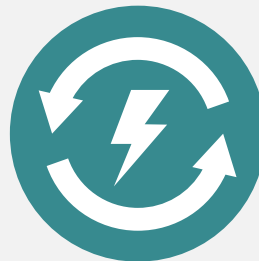
## Reclaiming energy

SDG7: Affordable & clean energy



---

Our **£8m** thermal energy plant generates heat from our waste to power our tanneries.



---

We reclaim enough energy from our waste to heat **2,250** households.

Based on average UK household as reported by Department of Energy and Climate Change (DECC)



---

We buy **100%** of our electricity from renewable sources.

Defined by the Renewable Energy Guarantees of Origin scheme

**Lowest carbon leather**

SDG12: Responsible consumption and production

## Take Back Scheme

**Our pioneering take back scheme reclaims energy from your end of life leather in a patented circular process.**

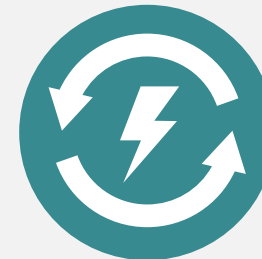
Minimising waste to landfill radically reduces your carbon footprint as well as ours.



End of life seat covers which would normally go to landfill are retrieved from customer



The covers are then shredded ready for processing within our thermal energy plant



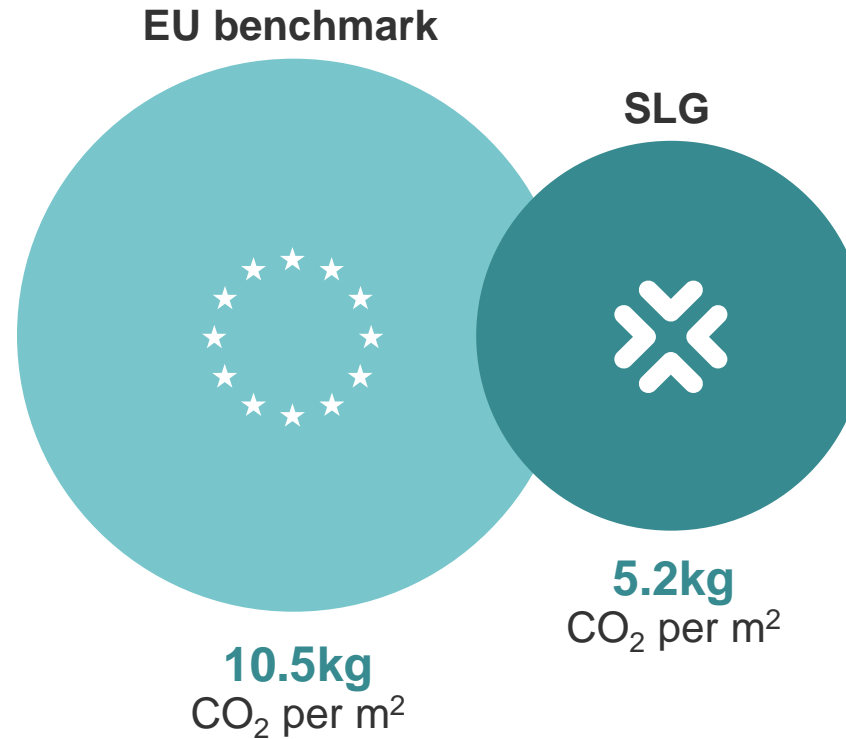
The processed shredded covers are converted into energy which powers our tanneries

**Lowest carbon leather**

SDG12: Responsible consumption and production

## Life cycle analysis

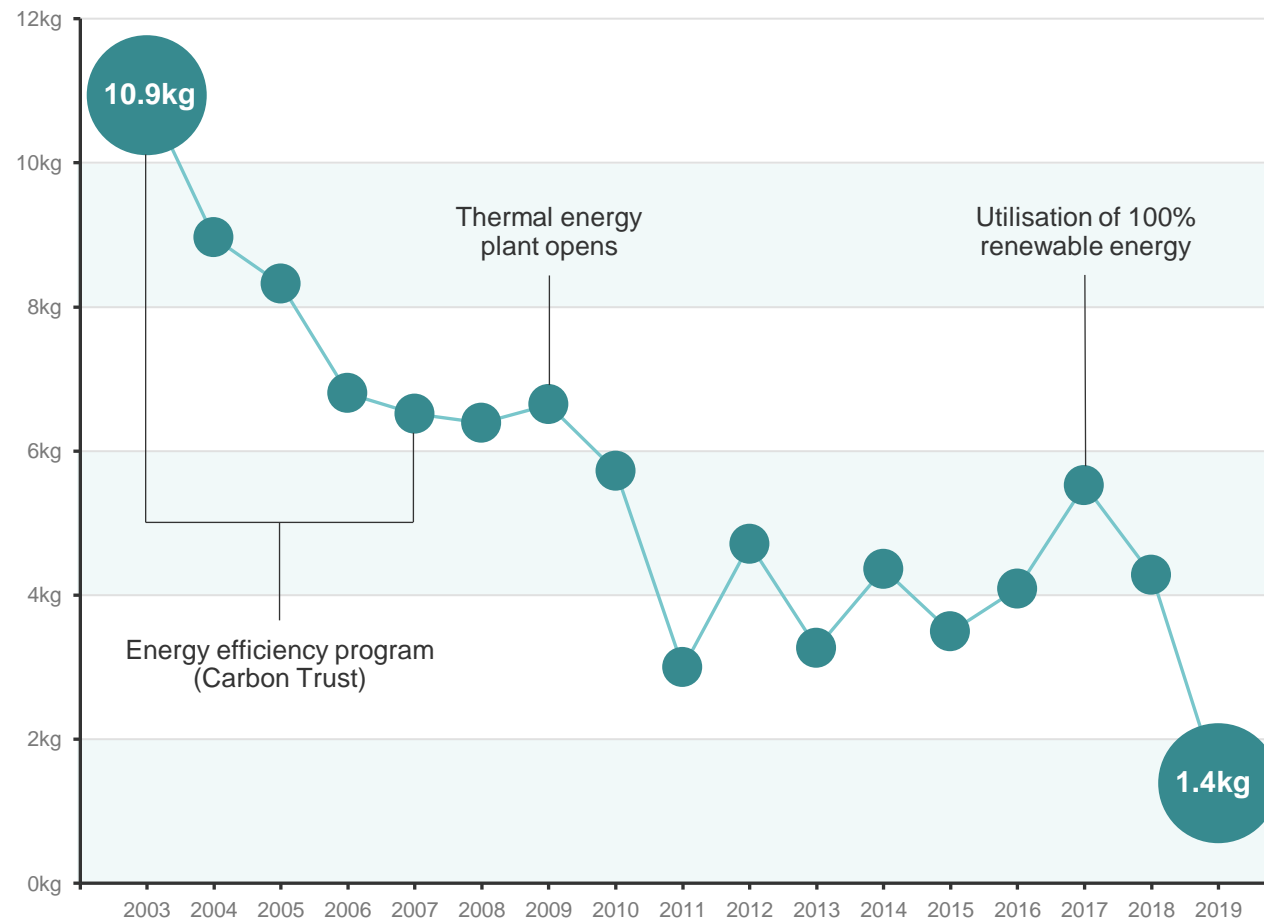
The LCA of our product, as measured using the internationally accepted PCR methodology, is **less than half** the EU benchmark. Take back further reduces this LCA.



**Lowest carbon leather**  
SDG12: Responsible consumption and production

# Carbon intensity

Average carbon intensity of our leather, shown as kg of CO<sub>2</sub> per hide, reducing by calendar year.



# Making leather without costing the earth

[warren.bowden@slgtechnology.com](mailto:warren.bowden@slgtechnology.com)

Bridge of Weir Leather Company Ltd  
Baltic Works  
Kilbarchan Road  
Bridge of Weir  
Renfrewshire  
PA11 3RH  
Scotland

[www.bowleather.com](http://www.bowleather.com)